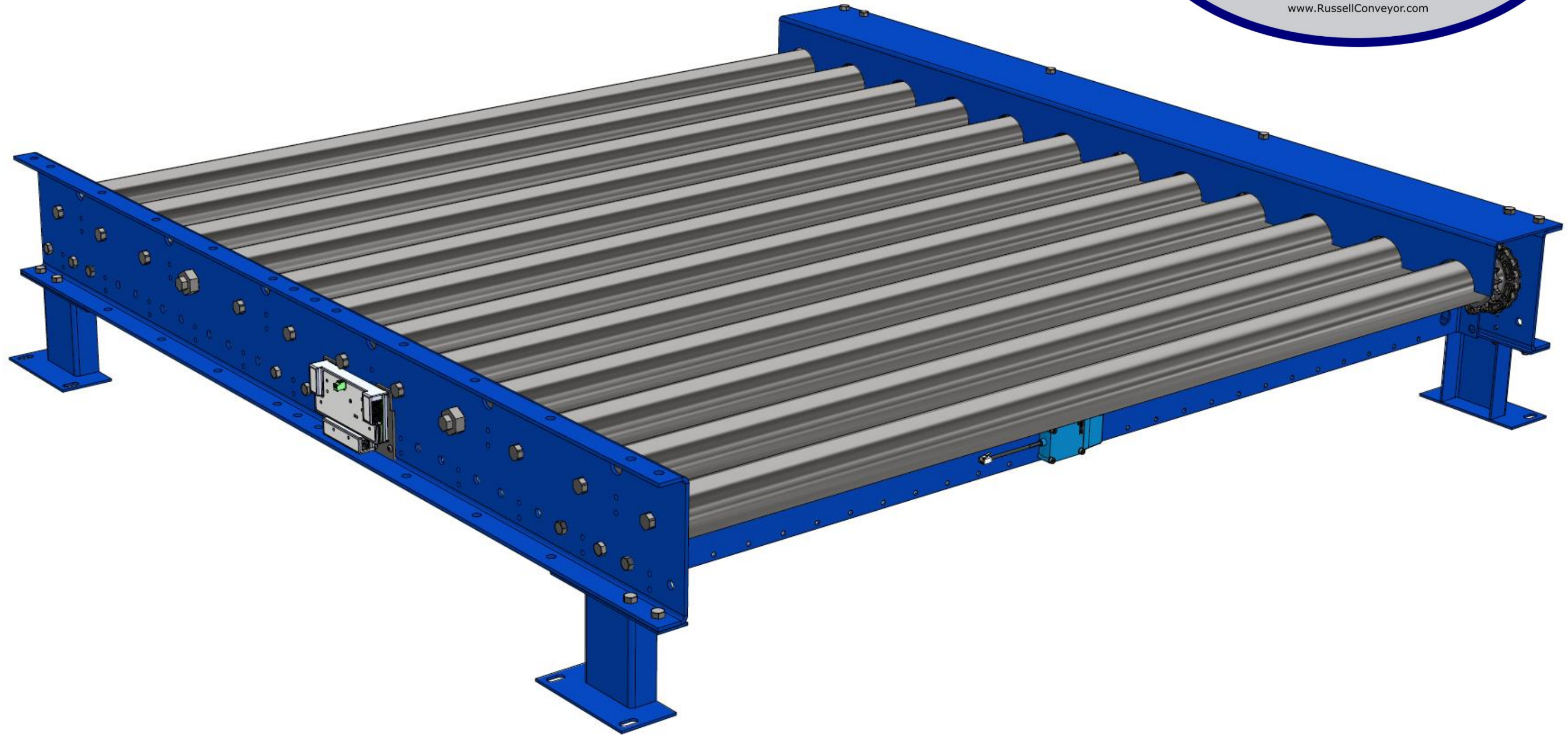
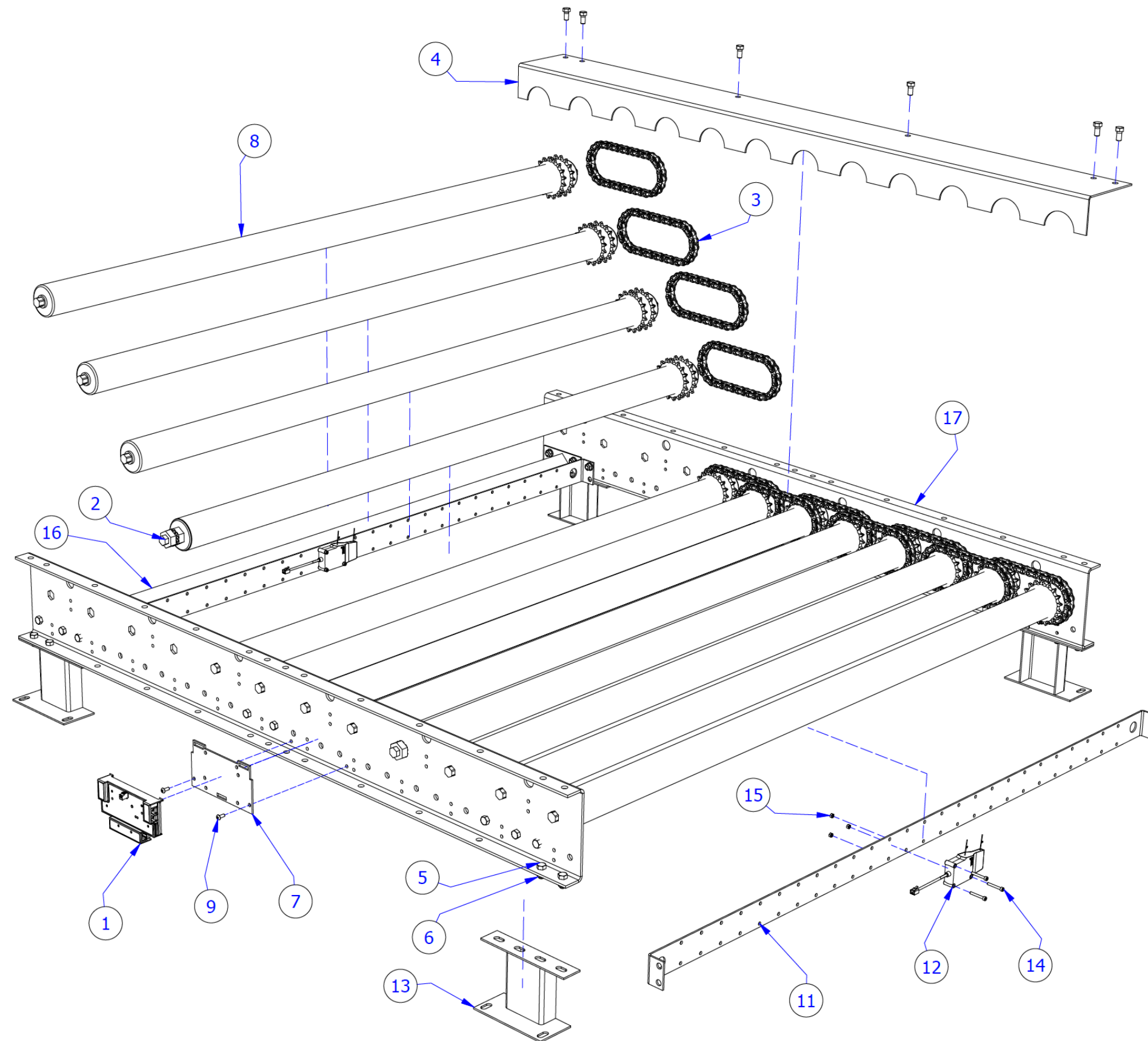


# MDR PALLET CONVEYOR





MDR PALLET CONVEYOR PARTS LIST			
ITEM	QTY	PART NUMBER	DESCRIPTION
1	1	CONVEYLINX	CONTROL CARD
2	2	PR-XX-XX-XXX-XXX-X-X-X	DRIVE ROLLER
3	11	NO. 50 CHAIN	CHAIN DRIVE
4	1	RCE-60-UPG-5RC	CHAIN GUARD
5	30	3/8-16 - 3/4	HEX BOLT
6	30	3/8 - 16	HEX FLANGE NUT
7	1	RCE-CONVEYLINX-BRACKET	CARD BRACKET
8	10	XXXXDA-ROLLER	IDLER ROLLER
9	2	10 - 24 x 1/2	SOCKET HEAD BOLT
10	2	10 - 24	NEX NUT
11	2	RCE-DIFF-BRKT-XXBF	DIFFUSED PHOTO EYE BRACKET
12	2	S259195	DIFFUSED PHOTO EYE
13	4	RCE-X-X-LA	LEG ASSEMBLY
14	6	M4x0.7 x 30	SOCKET HEAD BOLT
15	6	M4 x 0.7	HEX NUT
16	3	RCE-PFCM-XXBF-Welded	WELDED CROSSMEMBER
17	2	RCE-PALLET-F-RSL-XX-XRC	BED FRAME



PulseRoller Part Numbers

Part Number Definition

①

P R

PULSEROLLER Family

② ③

A D

Model  
DC24V

④

4 8

Roller Diameter

⑤

5 0 0

Roller Length

⑥ ⑦

4 5 Z

Speed Code  
Tube Material & Lagging Options

⑧

S

Motor Type

⑨

G

Interlocking Options

⑩

Q

Custom Option

② Model

A

Standard

B

Built-in Brake

D

Dual Drive

V

NSF Certified Wash-down Rated (IP-66)

W

Wash-down Rated (IP-66)

Z

Freezer Rated

④ Roller Diameter

48

48.6 mm (1.9")

50

50.0 mm (1.97")

57

57.0 mm (2.24")

60

60.5 mm (2.38")

⑤ Roller Length (mm) – Available in 1 mm increments

Formulas for Roller Length (RL) based upon Between Frame (BF) dimension for proper clearance

For Interlocking Options **A** and **G**:  $RL = BF - 8mm - \text{Customer Required Clearance}$

For Interlocking Options **H** and **F**:  $RL = BF - 35mm - \text{Customer Required Clearance}$

For most conveyor applications, Customer Required Clearance = 2mm

⑥ Speed code

Select Speed Code from "Available Speed Codes with Performance Data" table in Characteristics Data tab

⑦ Tube Material and Lagging Options¹

Z

Steel, Zinc Plating, No Lagging (Standard for Roller Diameters **48** and **50**)

A

Steel Unichrome Plating, No Lagging (Standard for Model **V**, **W** and Roller Diameters **57** and **60**)

J

Stainless tube

B

3 mm Black rubber lagging

Q

2 mm PVC Grey sleeve

W

3 mm Urethane lagging

Y

Special

K

3 mm Kastalon sleeve (orange)

⑧ Motor Type²

S

SENERGY (JST Connector)

M

SENERGY-Ai (4 Pin M8 Connector)

⑨ Interlocking Options¹

A

Plain Straight, No Interlocking

G

Round Groove

H

Micro V-Pulley

F

Round Groove Pulley

D

Dual Sprockets

Y

Special

⑩ Custom Option

Q

Standard

B

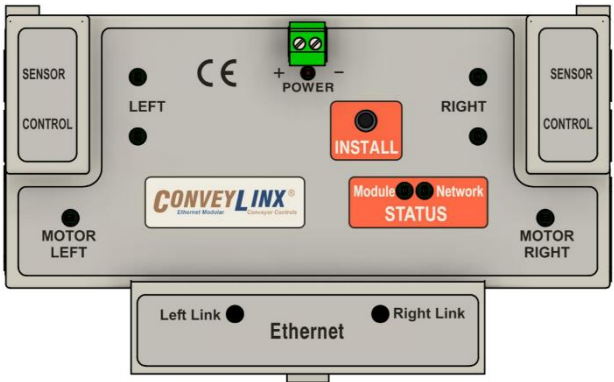
Double Bearing Pinned Construction

Y

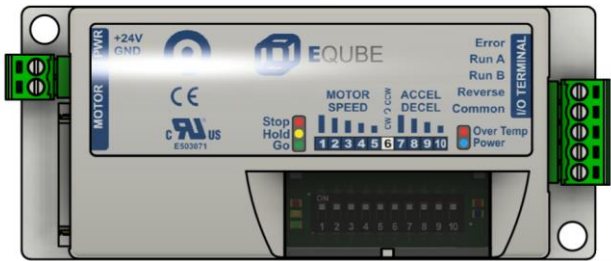
Special

Control Card Types

For accumulation conveyor: ConveyLinX



For transportation Conveyor: EQube



# PulseRoller Dual Sprocket Pallet Roller

MODEL PR-PD-63-XXX-XXASDQ

